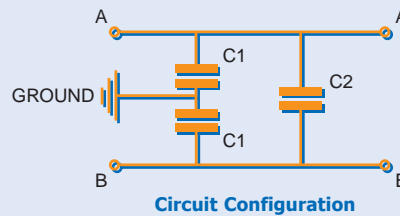


Integrated Passive Components

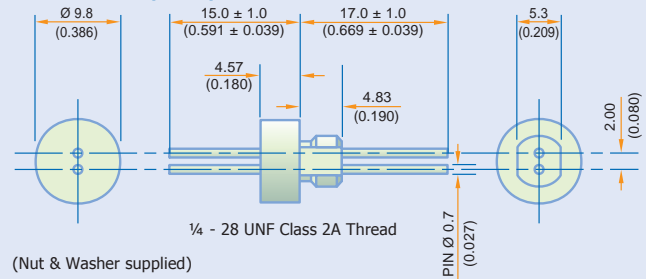
1/4-28 Thread Balanced Line EMI Filters

SFJEB

The Syfer balanced line filter is a 2-pin panel mounting device suitable for balanced lines and twisted pairs. It is ideal for passing lines through a bulkhead, and the feedthrough construction offers insertion loss performance up to 1GHz and above. The filter also incorporates capacitance line-to-line as well as line-to-ground, and therefore both differential and common mode filtering are offered in the same package. In this way one single device can replace three separate components.



Dimensions mm (inches)



(Nut & Washer supplied)

Electrical details

Electrical Configuration	See Circuit Configuration		
Capacitance Measurement	At 1000hr point		
Temperature Rating	-55°C to 125°C		
Dielectric Withstand Voltage	Rated Voltage	D.W.V.	Dielectric
	200V	500V	X7R
Capacitance Range	Line to Ground (C1)	Line to Line (C2)	
	4.7nF	2.35nF	
	10nF	5nF	
	22nF	11nF	
	47nF	23.5nF	
	100nF	50nF	

(Other values can be supplied, consult factory for details).

Mechanical details

Nut A/F	7.92mm (5/16")
Head Diameter	9.8mm (0.386")
Washer Diameter	11.35mm (0.447")
Mounting Torque	0.9 Nm (10.2 lbf in) max.
Mounting Hole Diameter	6.7mm O.D., 5.5mm A/F (0.264" O.D., 0.217" A/F)
Max Panel Thickness	2.3mm (0.091")
Weight	3.0g typical (0.11oz)
Finish	Silver plate on copper undercoat



Type No.	Capacitance (C1) (+/-20%)	Dielectric Code	Rated Voltage (d.c.)	Current Voltage Amps
SFJEB2000472MX1	4.7nF	X7R	200	10
SFJEB2000103MX1	10nF	X7R	200	10
SFJEB2000223MX1	22nF	X7R	200	10
SFJEB2000473MX1	47nF	X7R	200	10
SFJEB2000104MX1	100nF	X7R	200	10

Ordering Information

SF	J	E	B	200	0104	M	X	1
Syfer Filter	Case size 9.8 O.D.	Thread 1/4-28 UNF	Electrical Configuration Balanced Line Filter	Voltage 200=200Vd.c.	Capacitance Expressed in picofarads (pF). First digit is 0. Second and third digits are significant figures of capacitance code. The fourth digit is number of zeros following. Example: 0104=100,000pF.	Capacitance Tolerance M=±20%	Dielectric X=X7R	Nuts & Washers 1=With

Ceramic filter element manufactured in the UK by Syfer Technology Limited under licence from X2Y attenuators LLC.